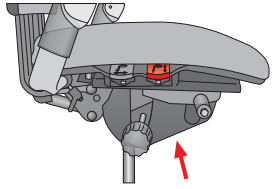
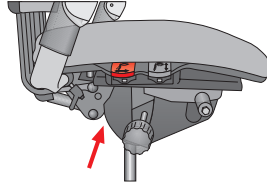


FUNCTIONS



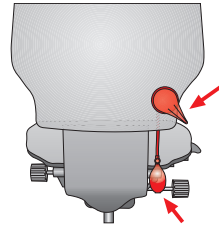
ADJUSTING THE SEAT HEIGHT

Lift the front lever to adjust the height of the chair.



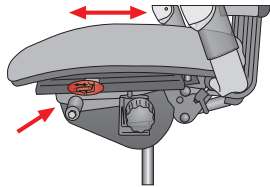
BACKREST ANGLE

Use the rear lever to adjust the back angle.



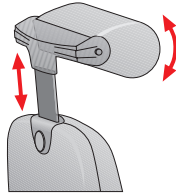
BACKREST HEIGHT ADJUSTMENT/ ADJUSTABLE LUMBAR SUPPORT

Lift the lever to unlock (adjust height). Push the lever down to lock.
If fitted, the lumbar support is adjusted by using the lumbar pump.



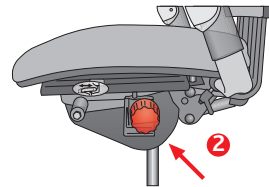
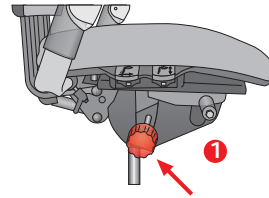
SEAT SLIDE

The sliding seat can be adjusted to different seat depths. Press the button in and move the seat to the desired position. Release the button to lock the seat.



ADJUSTING THE NECKREST (IF FITTED)

Adjust the height of the neckrest by moving it up or down.
The neckrest cushion can also be adjusted to suit your required position.

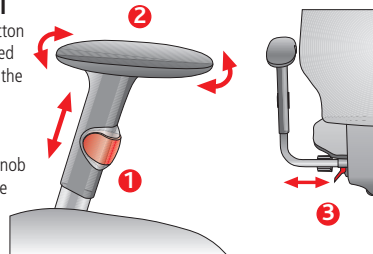


FREE-FLOAT

1. Turn the handle on the right backwards to release the free-float. This can be locked in any position by turning the handle forwards.
2. Adjust the tension of the free-float action according to your height and weight using the handle under the seat. Turn backwards for firmer tension.

ARMREST ADJUSTMENT

1. Adjusting the height: Press the button and move the armrest to the desired height. Release the button to lock the armrest in position.
2. Rotate the armpad to desirable position.
3. Adjusting the width: Release the knob and adjust each armrest to give the desired width.



RH LOGIC 400/300

