

RollerMouse® Red plus

User Guide







Thank you for giving us an opportunity to help you work more comfortably and efficiently. Contour Design has been striving to build the best mouse since 1995. I'm proud to say that RollerMouse Red is our finest accomplishment to date. Renowned industry experts agree, and for the first time, awarded a central pointing device the prestigious "red dot" award.

Over five years ago we set out to build the most versatile RollerMouse. We wanted it to have the smoothest and most precise cursor control, so we invented a new technology that tracks the roller motion from inside a tube. We also wanted to deliver the most effortless mouse click, so we eliminated the traditional mechanical switch and invented a way for users to independently adjust click force and click sound.

What you are about to experience is the result of many years of hard work from our amazing engineering team. Enjoy this fine piece of precision engineering from Contour Design for many years to come.

Please let us know what you think by visiting
www.rollermouse.com

Thank you for your support,

A handwritten signature in black ink, appearing to read "Steve Wang", written over a light gray rectangular background.

Steve Wang
CEO

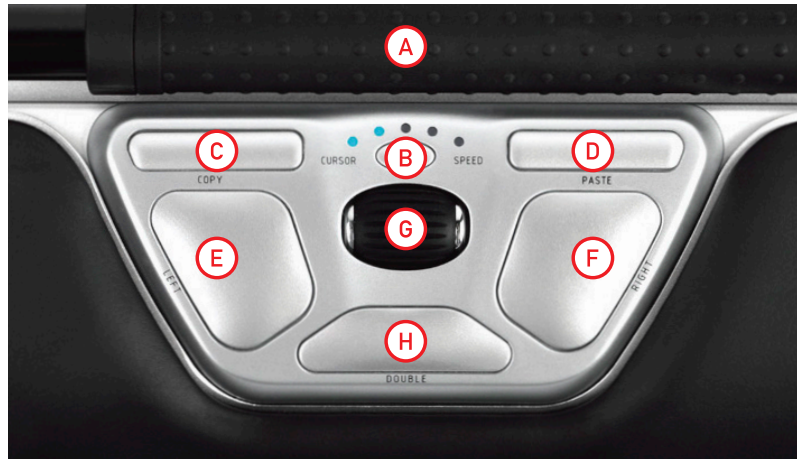
Box contents

1. RollerMouse Red
2. Red plus palm support
3. Two short keyboard risers
4. Two long keyboard risers
5. User guide
6. Palm support removal key



RollerMouse functions

- A. Rollerbar
- B. Cursor speed adjustment
- C. Copy
- D. Paste
- E. Left-click
- F. Right-click
- G. Scroll wheel
- H. "One touch" double-click



Keyboard positioning

Before plugging in the unit take a moment to check the height and angle of your keyboard, and find the arrangement that's most comfortable for you. The package includes keyboard risers

③ ④ that can help you to achieve the correct angle and height regardless of the type of keyboard you are using. The spacebar on your keyboard should come just above your Rollerbar. To achieve a proper ergonomic position, the top of the keyboard should be level.

The following examples show three different ways of arranging the keyboard. These are typical configurations. Your set-up may vary.

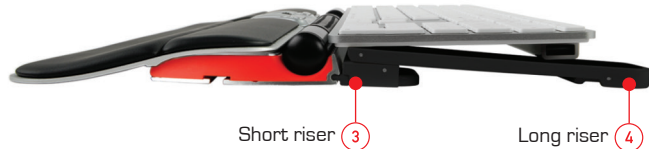
Example 1 -
Thick keyboard



Example 2 -
Standard keyboard - top of long riser is level



Example 3 -
Thin keyboard - top of long riser tilts down



Inserting the keyboard risers



Fit the end of the short riser ③ into the slot on the back of the RollerMouse unit.

Press the end of the long riser ④ over the top of the short riser.



Adjust keyboard risers to preferred angle and height.

Connecting to a computer



Plug the RollerMouse Red into your computer's USB port. Allow your computer a few seconds to automatically install it.

Using the Rollerbar

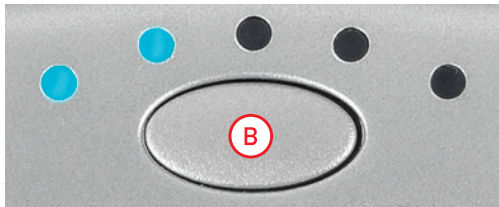
The Rollerbar A provides two functions:

- Pressing down on the Rollerbar performs a left-click.
- Moving the Rollerbar side to side and up and down performs cursor movement.



Changing cursor speed

Press button **(B)** to change cursor speed. There are five speed selections from slow to fast that are indicated by the LEDs.

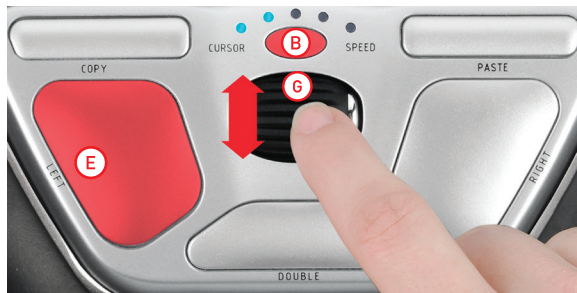


Rollerbar click force adjustment

Click force refers to how hard or soft it is to click the Rollerbar.

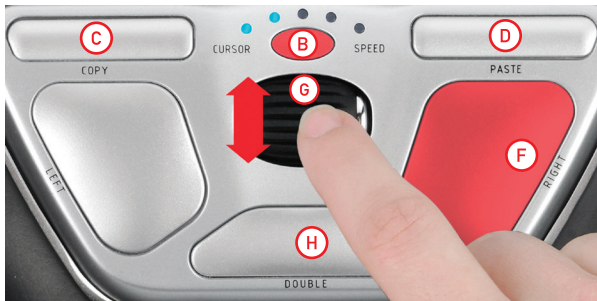
To change the click force, press and hold both the **(E)** and the **(B)** button for two seconds, the LED light will show current click force setting. While continuing to hold button **(E)** release button **(B)** and use scroll wheel **(G)** to change click force setting. Let go of **(E)** to select click force setting.

Note: The Rollerbar click function can be turned off using the above adjustment method, by moving the scroll wheel until all LEDs are lit.



Click volume adjustment

To change the click volume setting, press and hold both the (F) and the (B) button for two seconds, the LED light will show current click volume setting. While continuing to hold button (F) release button (B) and use scroll wheel (G) to change click volume setting. Let go of (F) to select click volume setting.



Changing the 'Double' Click button to Middle Button Function

To change button (H) from double click function to a middle button function, hold button (B) and (H) for two seconds until LEDs flashes to confirm. Repeating this process will revert back to double click function.

Adjusting to Mac operating systems

The Copy and Paste buttons on your RollerMouse can be adjusted for use with Mac operating systems. To switch to Mac mode press and hold (C) and (D) buttons for two seconds. The right-most LED will flash to indicate RollerMouse is in Mac mode. Repeating this process will revert back to Windows mode. The left-most LED will flash to indicate Windows mode.

Red plus palm support

We recommend that you use the Red plus palm support ②, however, if for any reason you would like to remove the wrist rest, lift the front edge of the RollerMouse and rest it in your left hand. Fit the palm support removal key ⑥ into the slot at the right end of the unit and twist the key counter-clockwise.

To install the palm support after removal, snap it into the slot on the front edge of your RollerMouse Red.



For more information, please visit:
www.rollermouse.com

Contour Design, Inc.
10 Industrial Drive
Windham, New Hampshire 03087, USA
Phone: 800-462-6678, 603-893-4556
E-mail: ergoinfo@contourdesign.com

Contour Design Ergonomics (UK) Ltd
Venture House, Arlington Square
Downshire Way, Bracknell
Berkshire, RG12 1WA, UK
Phone: +44 (0)1344 668 211
E-mail: info@contour-design.co.uk

Tested to comply with FCC standards
Patent pending



contour 