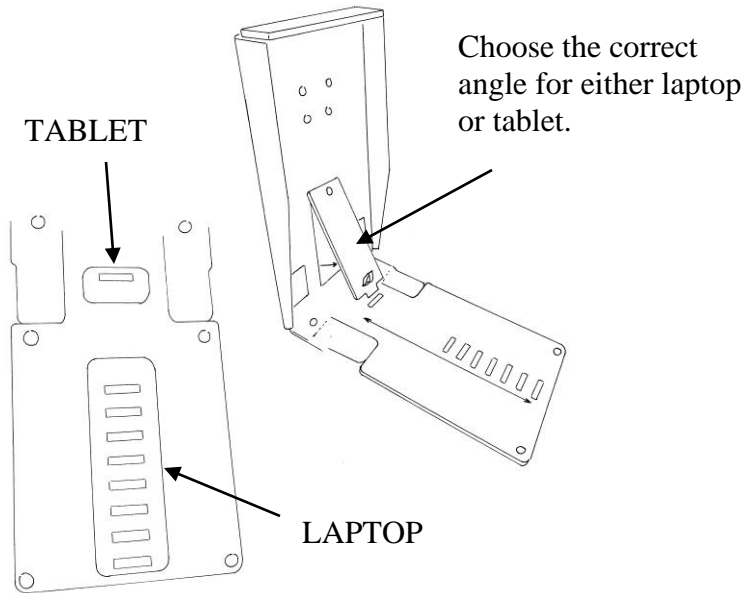


GO ECO: SHELL Laptop Stand & Tablet



Manufactured from sustainable timber.

Designed to be easily dismantled for refurbishment, repair or recycling.

Faux leather strap.

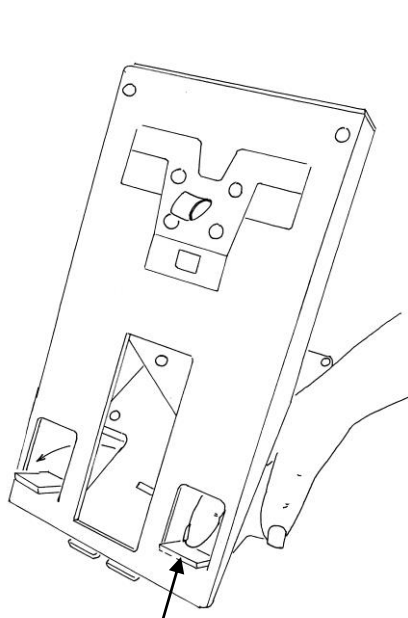
RPET case made from recycled plastic bottles.

Water based and environmentally safe finish.

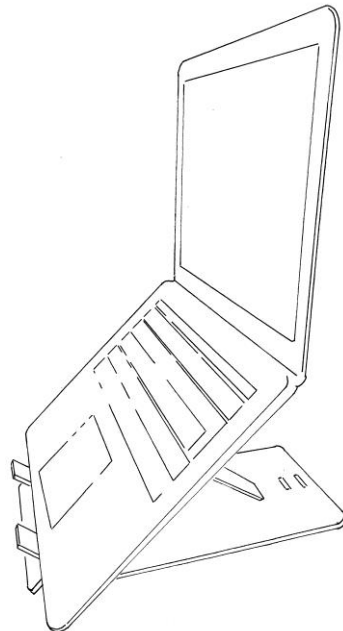
Environmentally conscious non-toxic plastic components.

Calming natural materials.

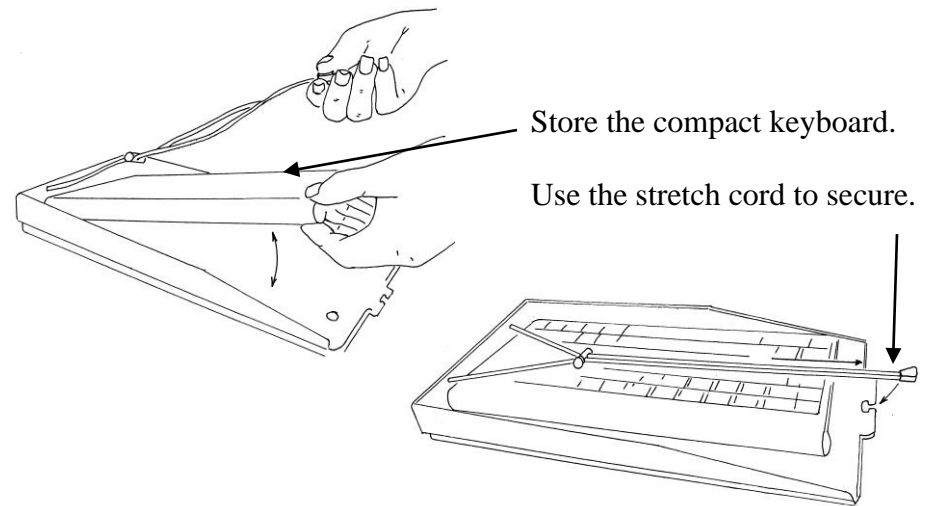
Always remove device before adjusting.



Flip out the laptop support arms



Another great solution from The Ergonomic Cafe Ltd.



Tablet set-up on other side.