

# Omega Plus

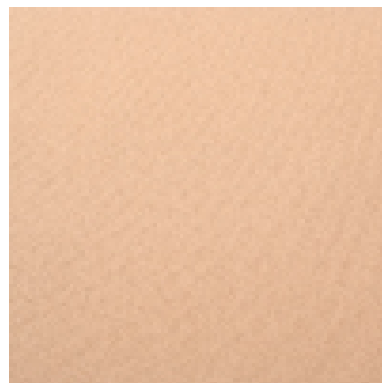
Amethyst  
OMP645\*



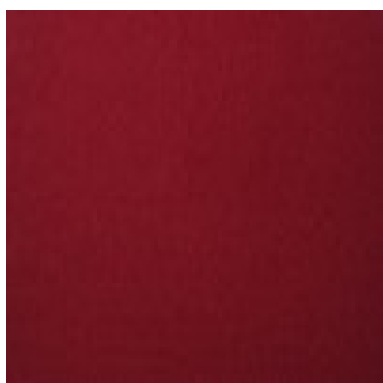
Atlantic  
OMP659\*



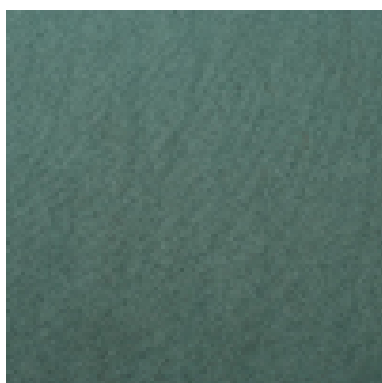
Beige  
OMP637



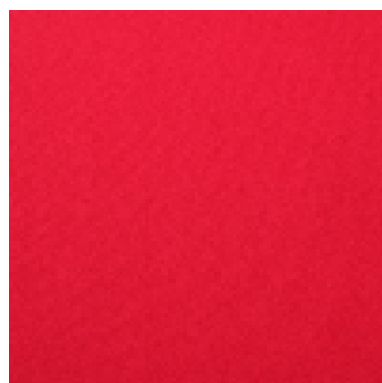
Burgundy  
OMP631



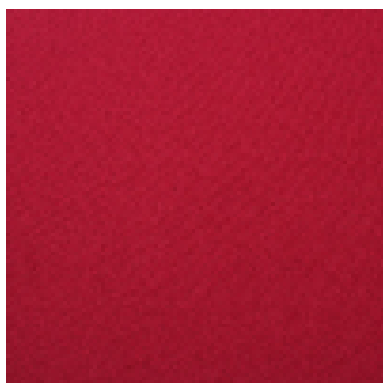
Cedar  
OMP629



Cherry  
OMP641\*



Chilli  
OMP607\*



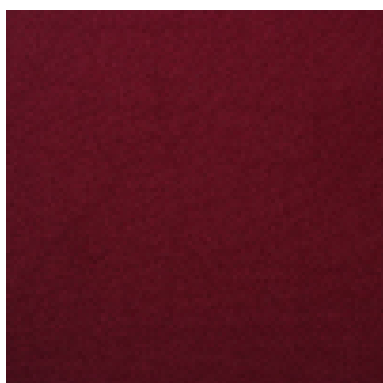
China  
OMP628



Citrus  
OMP651



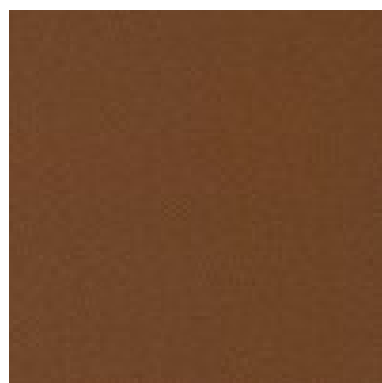
Claret  
OMP623\*



Cloud  
OMP617\*



Conker  
OMP662



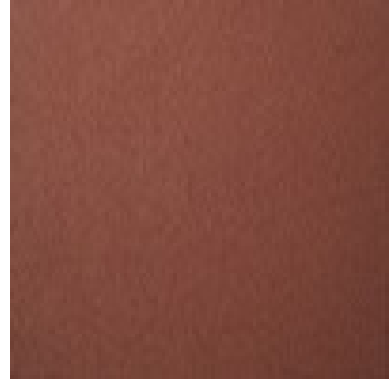
Cyan  
OMP653



Diablo  
OMP673\*



Fawn  
OMP639



Forest  
OMP626\*



Graphite  
OMP619



Heather  
OMP611\*



Jade  
OMP615\*



Khaki  
OMP640



Kingfisher  
OMP613\*



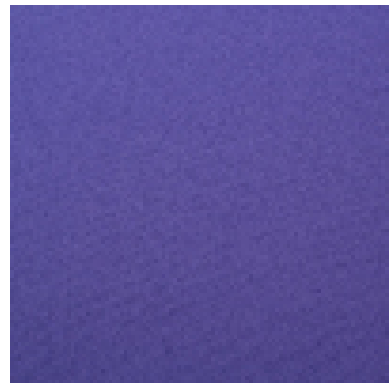
Lagoon  
OMP604\*



Laurel  
OMP612\*



Lilac  
OMP603



Lime  
OMP635\*



Magenta  
OMP652



Marine  
OMP649\*



Mauve  
OMP643\*



Midnight  
OMP610\*



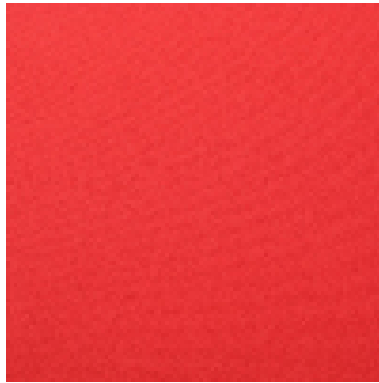
Ocean  
OMP625



Onyx  
OMP620



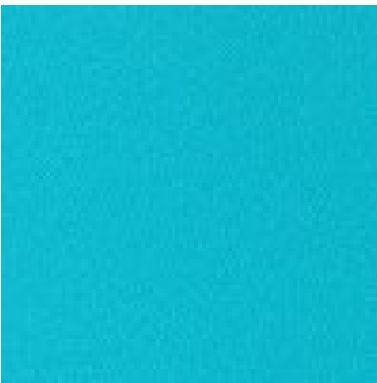
Orange  
OMP644



Oyster  
OMP660



Paradise  
OMP650



Pewter  
OMP663



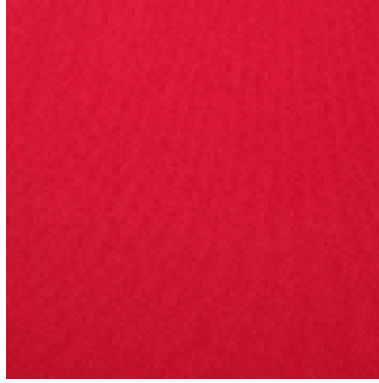
Pimento  
OMP647\*



Purple  
OMP632\*



Red  
OMP621



Royal  
OMP605\*



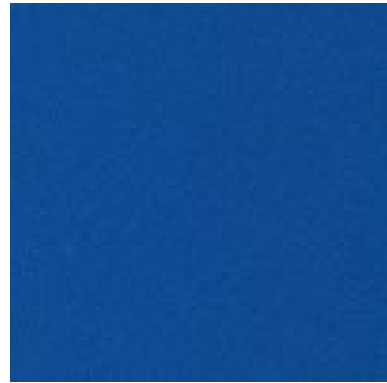
Rust  
OMP624



Sand  
OMP661



Serene  
OMP665\*



Shadow  
OMP627



Steel  
OMP664



Strawberry  
OMP622



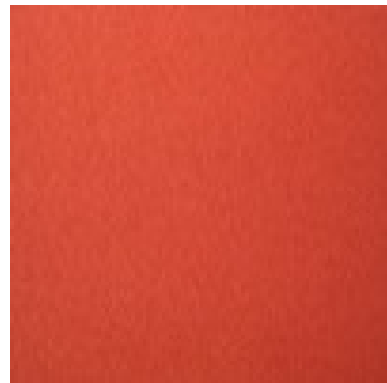
Sunset  
OMP636



Swizzle  
OMP648



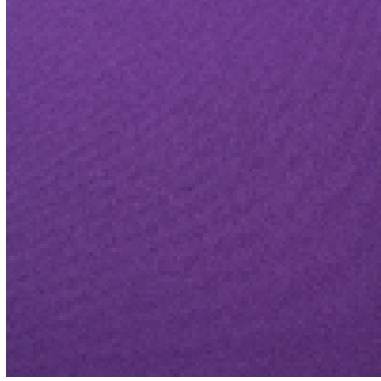
Tan  
OMP638



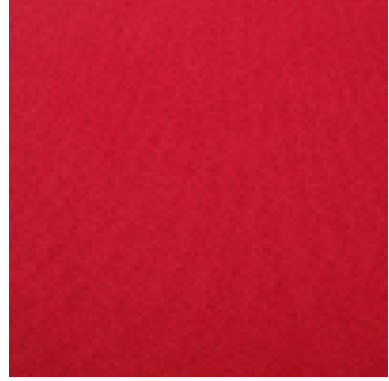
Teal  
OMP642



Violet  
OMP609\*



Wine  
OMP634



**Application:**

Upholstery fabric

**Composition:**

100% Polyester

**Width:**

137cm Tolerance  $\pm 2\%$  usable

**Weight:**

310gms/m<sup>2</sup> Tolerance  $\pm 5\%$

**Abrasion:**

Tested in accordance with BS 2543: 2004 to 100,000 rubs Martindale and has been graded 'SEVERE CONTRACT' suitable for all types of upholstery use

**Flame Retardancy:**

BS 7176: 2007 Low Hazard

BS 7176: 2007 Medium Hazard

BS 5852:2006 Ignition Source 5

BS EN 1021-1:2006(cigarette)

BS EN 1021-2:2006(match)

Note: Flammability performance is dependent on foam used

**Light Fastness:**

6 (ISO 105 - B02:1999)

**Fastness to Rubbing:**

5 (BS EN ISO 105-x12:2002) Scale 1-5, 5 is best.

**Colour Matching:**

Batch to batch variations in shade may occur within commercial tolerances. We recommend that the fabric be examined before use as no claims will be considered after cutting.

**Product Development:**

Specifications may be modified from time to time in accordance with our product development program without notice.

**Fabric Care And Maintenance:**

Clean using a proprietary upholstery shampoo. Please refer to our cleaning guide

**Availability:**

All our fabrics are generally available ex-stock for immediate despatch

**Technical Assistance:**

Our technical staff will be pleased to offer advice on F.R and other matters

**Guarantee:**

Fabric guaranteed for 5 years under normal wear and tear. See our Terms and Conditions

**\* Co-ordinating colours for seating are available in the Galaxy seating range.**